

# RACEAMERICA

*T i m i n g   S y s t e m s*

## *Model 6X60B LED Display Utility User's Manual*

Rev A



**RACEAMERICA, Inc.**  
**P.O. Box 3469**  
**Santa Clara, CA 95055-3469**  
**(408) 988-6188**  
**<http://www.raceamerica.com>**  
**[info@raceamerica.com](mailto:info@raceamerica.com)**

Copyright 2003 RACEAMERICA, Inc.

# Table of Contents

<b>PRODUCT OVERVIEW .....</b>	<b>3</b>
<b>PACKAGE COMPONENTS.....</b>	<b>3</b>
<b>PC REQUIREMENTS .....</b>	<b>3</b>
<b>6X60 CONFIGURATION .....</b>	<b>3</b>
<b>SET-UP .....</b>	<b>3</b>
<b>TIME OF DAY CLOCK.....</b>	<b>5</b>
<b>THIS RUN TIME .....</b>	<b>5</b>
<b>COUNTDOWN TIMER .....</b>	<b>5</b>
<b>THIS RUN/BEST/PLACE SEQUENCE .....</b>	<b>5</b>
<b>SENTENCE DISPLAY .....</b>	<b>5</b>

## PRODUCT OVERVIEW

The Model 6X60B LED Displays are capable of displaying a variety of data from timers and PCs. This utility combines the most popular display requests in a single menu driven format which works with any Windows PC. The display uses the RS232 serial link to receive data to be displayed. The serial link is configured for 9600 baud. The 6X60B is capable of displaying numbers 0 through 9 and alpha letters A through Z with the exception of K, M, and W. Selected punctuation marks are also among the displayable character set listed in the back of this manual.

## PACKAGE COMPONENTS

- 1 - Floppy Disk or Zip file disputil.zip with files:  
disputil.exe  
commport.dll
- 1 - User's Manual

## PC REQUIREMENTS

The LED Display Utility will operate on any Windows PC with a serial port (D-sub 9-pin connector).

A serial cable (RACEAMERICA part number 06-PC02 or 06-PC05) is required to communicate between the PC and the 6X60B LED Display.

## 6X60 CONFIGURATION

The LED Display DIP switches on the back of the unit should be set so that all switches are in the ON position. Note any different positions so the display can be correctly reconfigured when the utility is not used.

## SET-UP

### STEP 1 - Install the Software files

Copy the two files (disputil.exe and commport.dll) into a directory on the hard drive of the PC.

### STEP 2 - Run the Utility

Double click the file disputil.exe. The COM port selection screen will appear.

### STEP 3 - Select COM Port

Select the COM port which is connected to the LED Display by clicking it on the screen. This will bring up the Main Menu. If the port selected is not available, an 'Unable to open COMX' will appear at the bottom of the window. Try another port if you are unsure of which port it is.

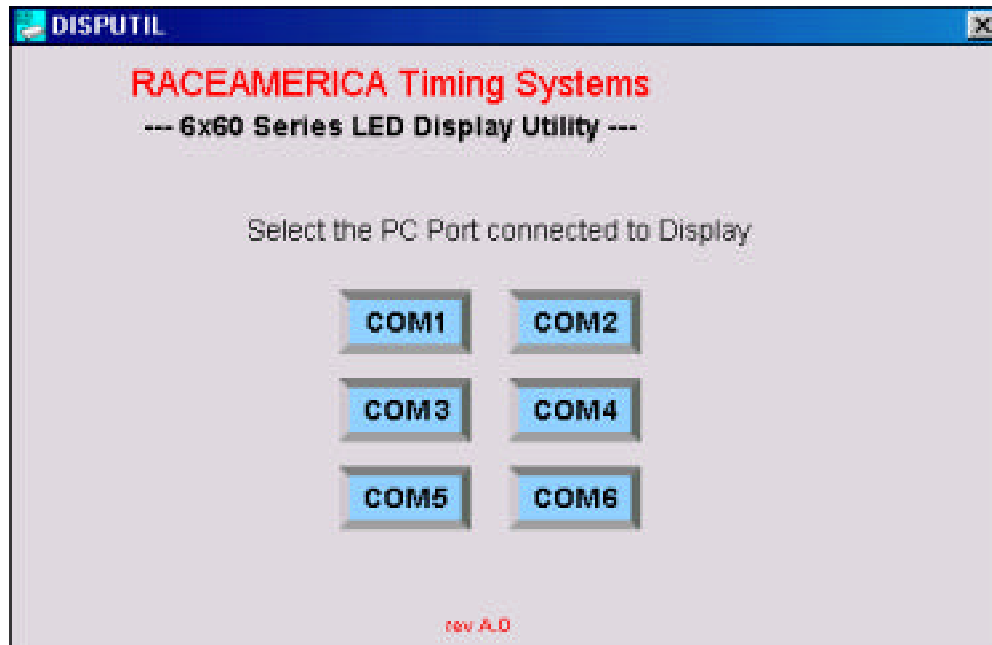
### STEP 4 - Send data to the LED Display

Input the desired information and click the button.

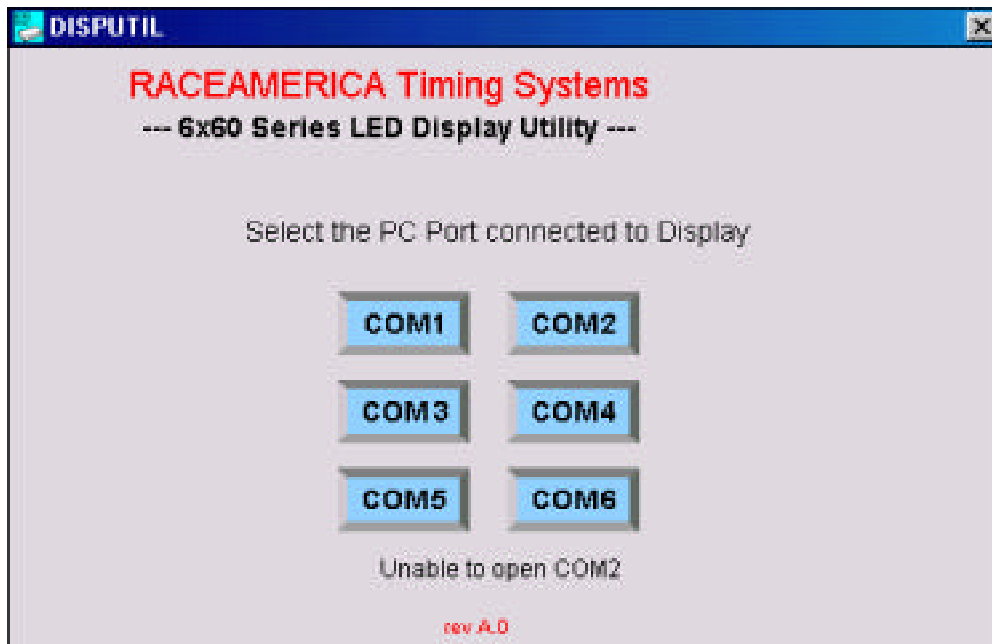
**NOTE: PC input is using the standard keyboard; the extended keyboard keypad keys cannot be used for data input.**

The LED Display Utility allows entry of five different forms of data for display:

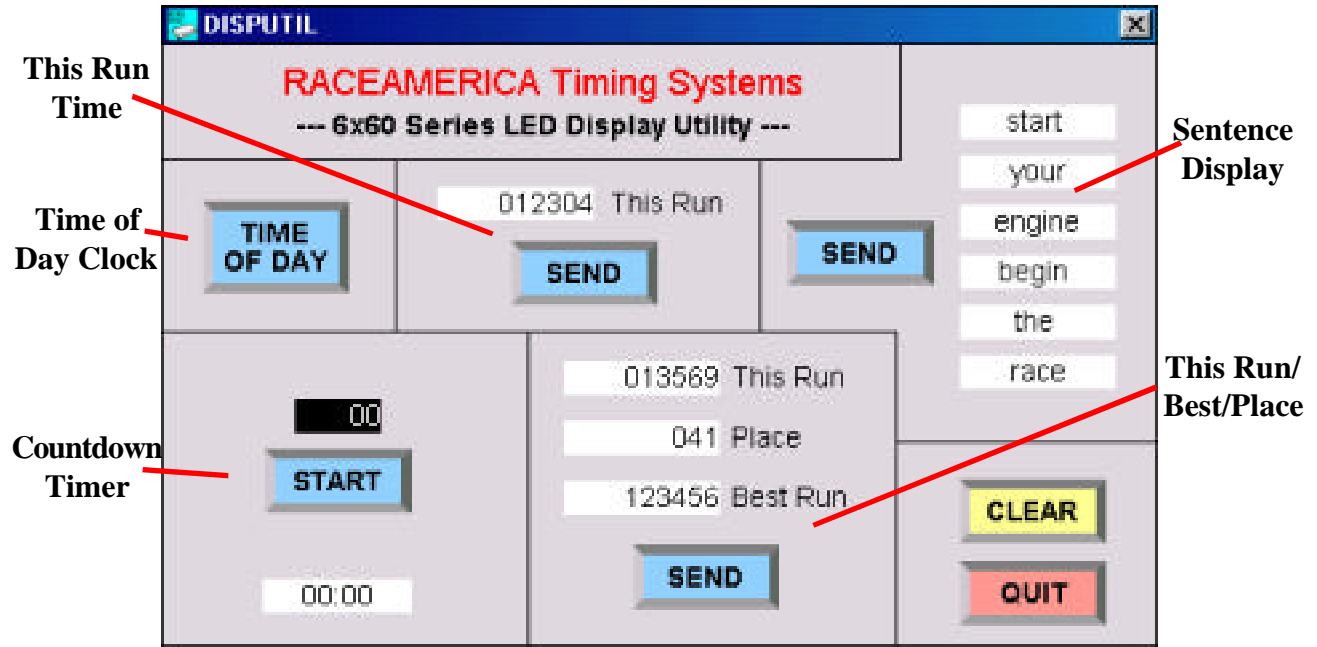
- Time of Day
- This Run Time
- Countdown Timer
- This Run/Best/Place Sequence
- Sentence Display



**COM Port Selection Screen**



**COM Port selected is not available**



**Main Menu**

**Time of Day** - Click this button to display the current time of day as maintained on the PC.

**This Run Time** - Enter any number up to six digits, click **Send**. The display will show XXX.XXX. If less than six digits are sent, the digits are right justified and leading zeros suppressed (not displayed). The decimal point will always display between the third and fourth place in the display. Once sent, the internal display clock maintains the time of day.

**Countdown Timer** - Enter a time in minutes from 1 to 99, click **Start**. This display shows a live countdown in seconds to until time is up and the display blanks out.

**This Run/Best/Place Sequence** - an extended display sequences the current run, best run and current place in the standings. Input the data in the fields and click **Send**. The display sequences as follows:

- (time of current run)
- 'bESt' 'run'
- (time of best run)
- 'PLAcE'
- (place in standings)
- 'tHIS' 'run'
- (time of current run repeated and held)

**Sentence Display** - Sentences can be sent to the display and are flashed in sequence on the display. It takes a couple of sentences to fully comprehend the combination of upper and lower case characters used to form words. Send up to six six character words. Input the desired words and click **Send**. Upper/lower case is selectable for some letters (see 6X60 manual for a full set of displayable characters).

**Clear Button** - Click the Clear button to immediately blank the display.