

RACEAMERICA

T i m i n g S y s t e m s

Model 3220
Soap Box Derby Timer

Data Capture Software
User's Guide

Rev A

RACEAMERICA, Inc.
P.O. Box 3469
Santa Clara, CA 95055-3469
(408) 988-6188
<http://www.raceamerica.com>
info@raceamerica.com

Copyright 2003 RACEAMERICA, Inc.

THEORY OF OPERATION

The Model 3220 SBD Data Capture Software works with a Soap box Derby Timer (SBD) to capture run times from the SBD, add racer information and save the data to a file for later analysis.

PACKAGE COMPONENTS

The data capture software includes:

Three files supplied on a floppy disk:

- comport.dll
- fileio.dll
- sbdcap.exe

User's Guide

LOCAL REQUIREMENTS

Personal Computer or Laptop Computer with Windows 95 or newer Operating System.

Console to PC Cable

One RS232 Serial Communications Port (d-sub 9-pin connector 9600 baud).

SET-UP STEPS

STEP 1 -

Connect the PC cable as shown in the diagram. The d-sub 9-pin connector connects to the PC Serial Port; the RJ45 connector to the RS232 port on the SBD Console.

STEP 2 -

Copy three files (**comport.dll**, **fileio.dll**, **sbdcap.exe**) from the floppy disk to a new folder (directory) on the computer hard drive.

STEP 3 -

Run the file *sbdcap.exe*.

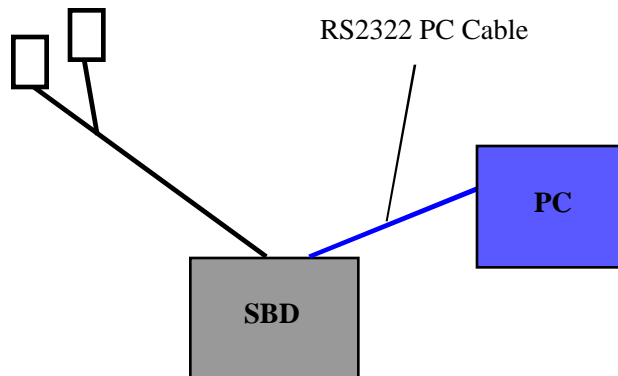
STEP 4 -

Select the Com Port which the cable is connected to from the menu by clicking the correct button on the screen. After clicking the Com Port button, the Main Screen (see pictures) will display.

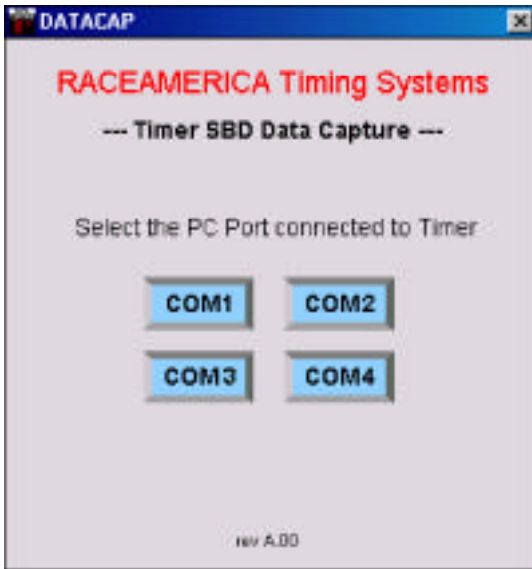
STEP 5 -

Set-up and power on the SBD.

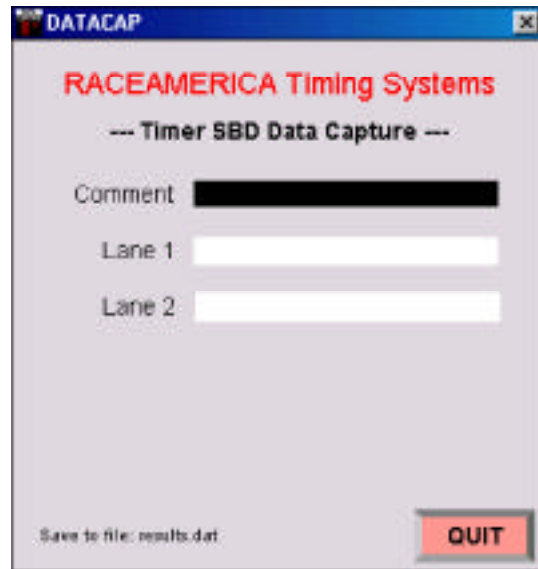
Track Sensors



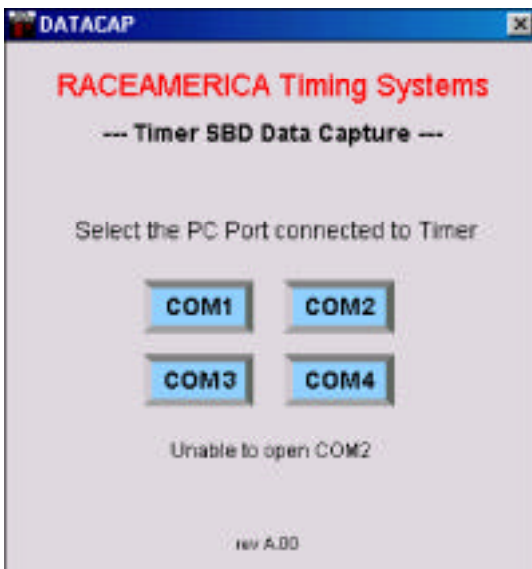
Cable Connections - Connect as shown to use the PC to capture race times from the SBD Timer



COM Port selection screen



Main Menu screen



COM Port selection screen
Error message - port not available

CAPTURING DATA

STEP 1 -

Run races according to the operating procedures with the SBD timer.

STEP 2-

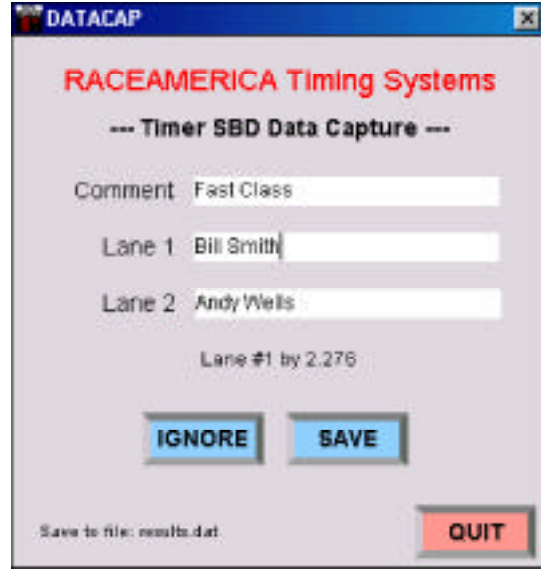
As each race ends, the winning lane and differential time displays on the SBD Cconsole and will pop up in the Data Capture main screen. Using the Tab key or mouse, move between **Comment**, **Lane 1** and **Lane 2**; make appropriate entries in each box (each field can be alphanumeric). Click the **SAVE** button when entry is complete. If the data is not valid or should not be saved, click the **IGNORE** button and the data will be deleted and not saved.

STEP 3-

Comments and driver information can be entered either before or after the race data is displayed. The computer will buffer information so there is no data lost if the next finish occurs before the last data is saved. After saving the race data, the next finish will be displayed either from the buffer or when the next race ends.



Data Capture received. Enter Comments (such as Class) and Lane 1 driver and Lane 2 driver. Lane 2 Winner



Data Capture received. Lane 1 Winner

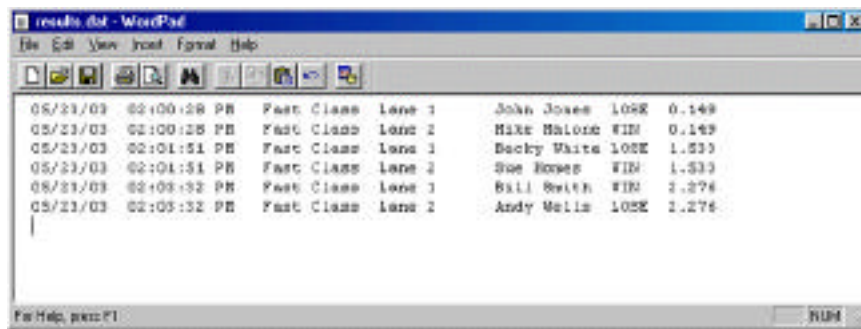
DATA FILE MANAGEMENT

Race data is saved in a file(**results.dat**) created by the software the first time the program is run and placed in the same folder (directory) created for the software.

The **results.dat** file is saved in TAB delimited format which can be imported into most spreadsheet programs. The data should appear by columns as follows:

- Computer date and time
- Comments
- Lane
- Driver
- Win/Lose designation
- Margin

The **results.dat** file may be removed or renamed after each event. A new file will automatically be created if none exists or an existing file will be appended with successive runs.



results.dat data file viewed in WordPad.